

COAXIAL ADAPTER

75ohm F Standard Series

Features

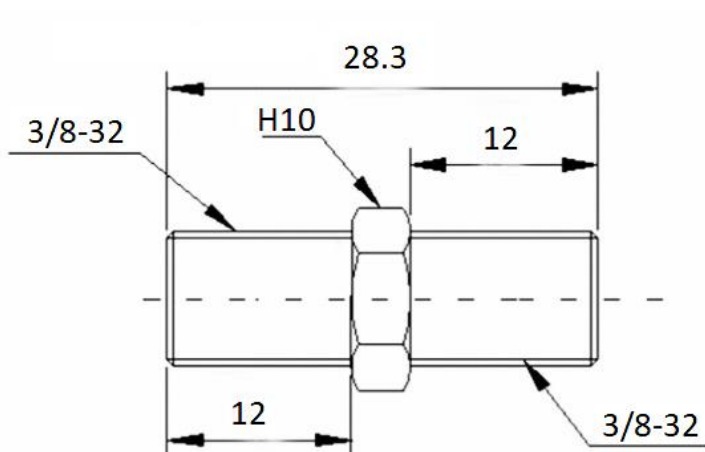
- ✓ Impedance :75ohm
- ✓ Low Insertion Loss
- ✓ Low VSWR

Specifications:

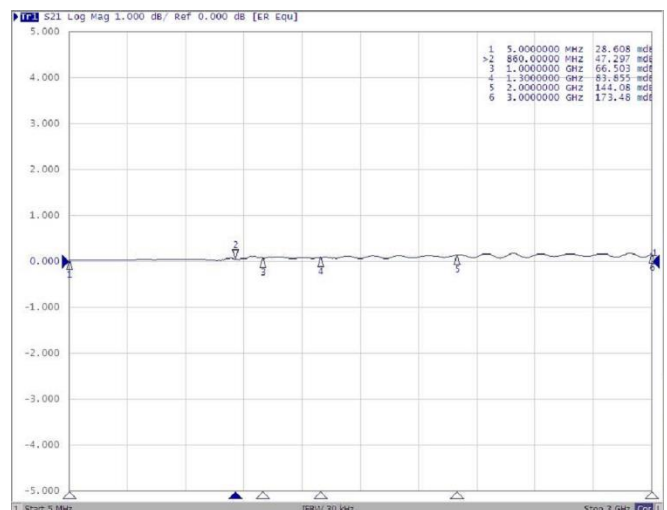
PART NUMBER	MVE1002
DESCRIPTION	75ohm F Female To F Female Adapter
ELECTRICAL	MATERIALS
FREQUENCY : DC-3GHz IMPEDANCE: 75ohm RETURN LOSS: 18dB MIN. Insertion Loss: ≤0.3 TEMPERATURE RANGE:-40°C~+ 60°C	BODY: BRASS, NICKEL PLATED CONTACT: PHOSPHOROUS BRONZE, GOLD PLATED INSULATOR: TEFLON

TOLERANCE: X=±0.5 X.X=±0.2

Outline Drawing (Unit: mm)



Typical Test Result



NOTES:
1. ALL SPECIFICATIONS ARE SUBJECT TO CHANGE WITHOUT NOTICE AT ANY TIME
2. CUSTOMER OUTLINE DRAWING FOR REFERENCE ONLY

